



HOWE

*The Infinite Intimate*  
Paperwork 2023



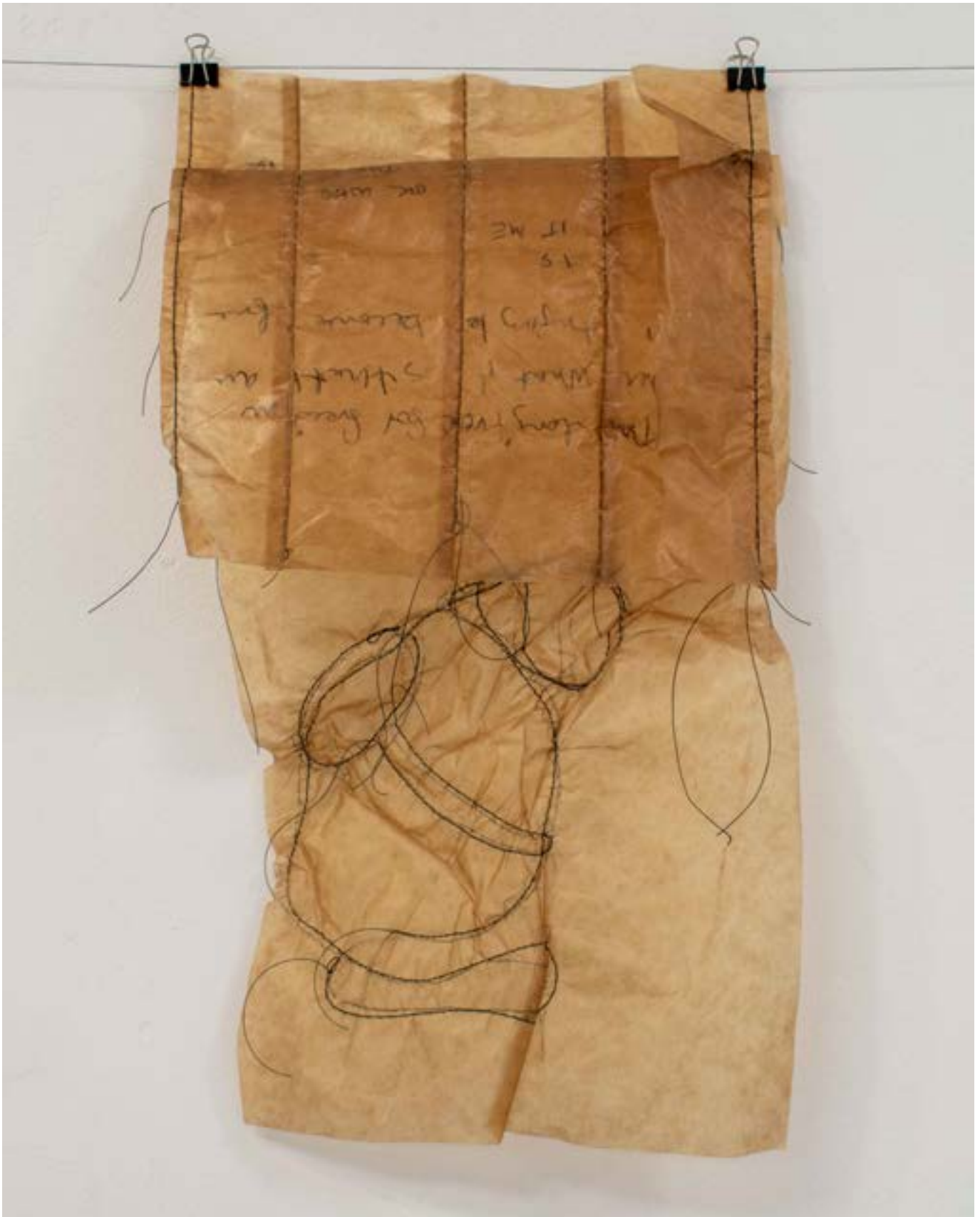
Howe, K. *I bend a branch and stitch you to me in this sacred space*. 2023, graphite and stitching on industrial Kraft paper. 44 x 42 cm.



Howe, K. *School Uniform with lace collar and socks*. 2023, graphite and stitching on industrial Kraft paper. 24 x 32 cm.



Howe, K. *Is it me.* 2023, graphite and stitching on industrial Kraft paper. 24 x 44 cm.  
(Side A view)



Howe, K. *Is it me.* 2023, graphite and stitching on industrial Kraft paper. 24 x 44 cm.  
(Side B view)

Howe, K. *The Infinite Intimate*. 2023, Stitching and industrial Kraft paper. 6.7 x 3.4 m  
Installation view: Lychee Gallery, London June 2023

To read more about this work and the show *Light Being*, curated by Jonathan Miles  
please view the show catalogue here:

<https://rcachsprojectgroup.wordpress.com/2023/06/21/light-being-june-2023/>





Howe, K. *They become who they always were*. 2023, art graph, sumi ink, liquid gold and graphite on industrial Kraft paper. 39 x 42 cm. (Side B view)

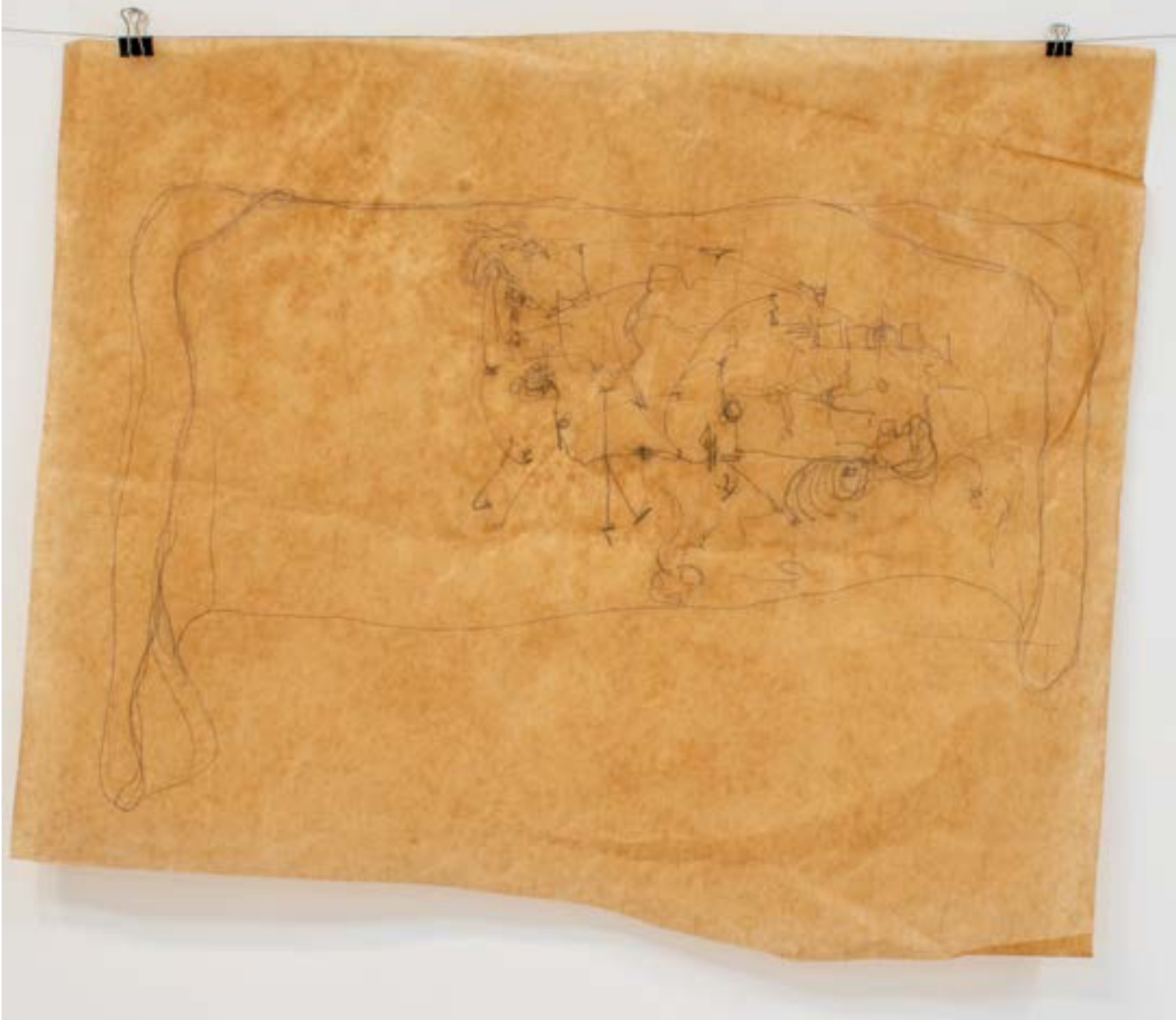


Howe, K. *bound to unwind* 2023, graphite and stitching on industrial waxed Kraft paper. 29 x 27 cm.



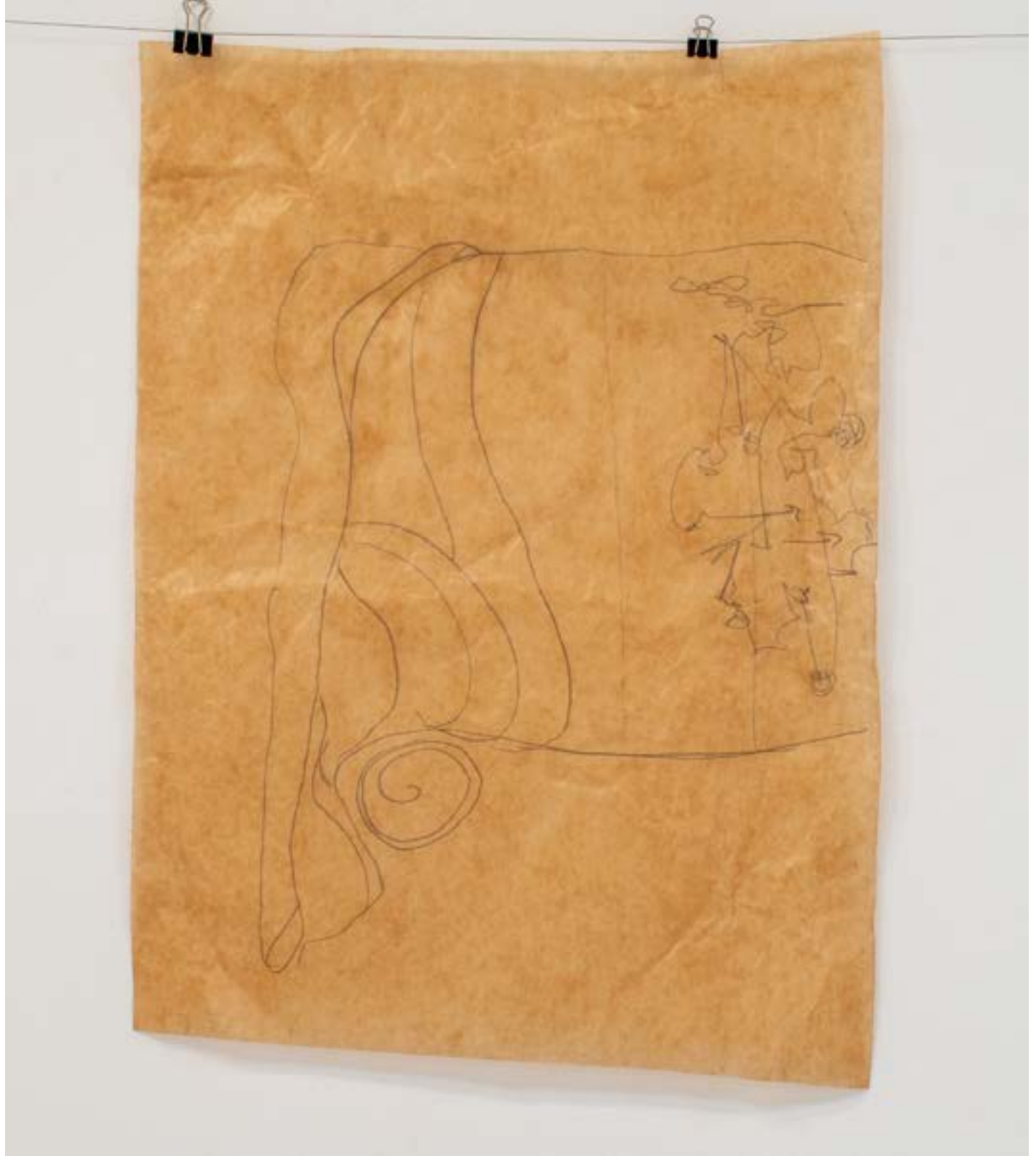


Howe, K. *Call me David*. 2023, graphite and stitching on industrial waxed Kraft paper. 24 x 43 cm.



Howe, K. *Diagram of path to homeostasis 2017 - 2023*. 2023, graphite industrial waxed Kraft paper. 66 x 58 cm.  
(Above: installation view. Right: detail view)





Howe, K. *Diagram of path to homeostasis 2017 - 2023 close up of curtain vortex*. 2023, graphite industrial waxed Kraft paper. 39 x 54 cm.

(this page and previous: preparatory sketches for *the Infinite Intimate* at Lychee Gallery, London June 2023.)



# HOWE

*The Infinite Intimate*  
Paperwork 2023

Contact:

i: @katehowestudios  
e: katehowe.com  
w: kate@katehowe.com